

# AGROMETEOROLOGICAL BULLETIN

Doc No: TEA 3/3/7/2 F-004

Revision No: 1

Effective Date: 01.07.2017

Page No: 1 of 5

Approved by:



**REPORTING PERIOD:  
01 – 10 DECEMBER 2025**



**ISSUE No.: 07**

**SEASON: 2025/26**

**RELEASED:15/12/2025**

## CONTENTS

CONTENTS .....	1
HIGHLIGHTS .....	1
RAINFALL AND TEMPERATURES .....	2
RAINFALL .....	2
TEMPERATURES .....	3
MAIZE AND OTHER CROPS.....	3
CURRENT FARMING ACTIVITY .....	3
MAIZE CROP STAGE AND CONDITION..	3
OTHER CROPS .....	3
LIVESTOCK AND PASTURES .....	4
WATER SITUATION .....	4
MEDIUM-TERM OUTLOOK.....	4
RAINFALL .....	4
TEMPERATURE.....	4
SOIL MOISTURE .....	4
WIND SPEED .....	4

## HIGHLIGHTS

- **Not much rainfall observed...**
- **Fair vegetation condition...**
- **No reported land preparation activities...**
- **Improvement in rainfall is anticipated...**
- **Cool to warm temperatures forecasted...**
- **Improvement in soil moisture expected...**

Compiled and Issued by: Agrometeorological Unit,

Swaziland Meteorological Service, Ministry of Tourism and Environmental Affairs.

Box 2652, Mbabane, Swaziland. ☎ (+268) 2404 8859 / 2404 6274. Fax: 2404 1530

E-mail: [dudu@swazimet.gov.sz](mailto:dudu@swazimet.gov.sz)

# AGROMETEOROLOGICAL BULLETIN

Doc No: TEA 3/3/7/2 F-004

Revision No: 1

Effective Date: 01.07.2017

Page No: 2 of 5

Approved by:

## RAINFALL AND TEMPERATURES

### RAINFALL

Significant rainfall was observed in the 1<sup>st</sup> dekad of December 2025, but below longterm average (**Figure 1**) and (**Map 1**).

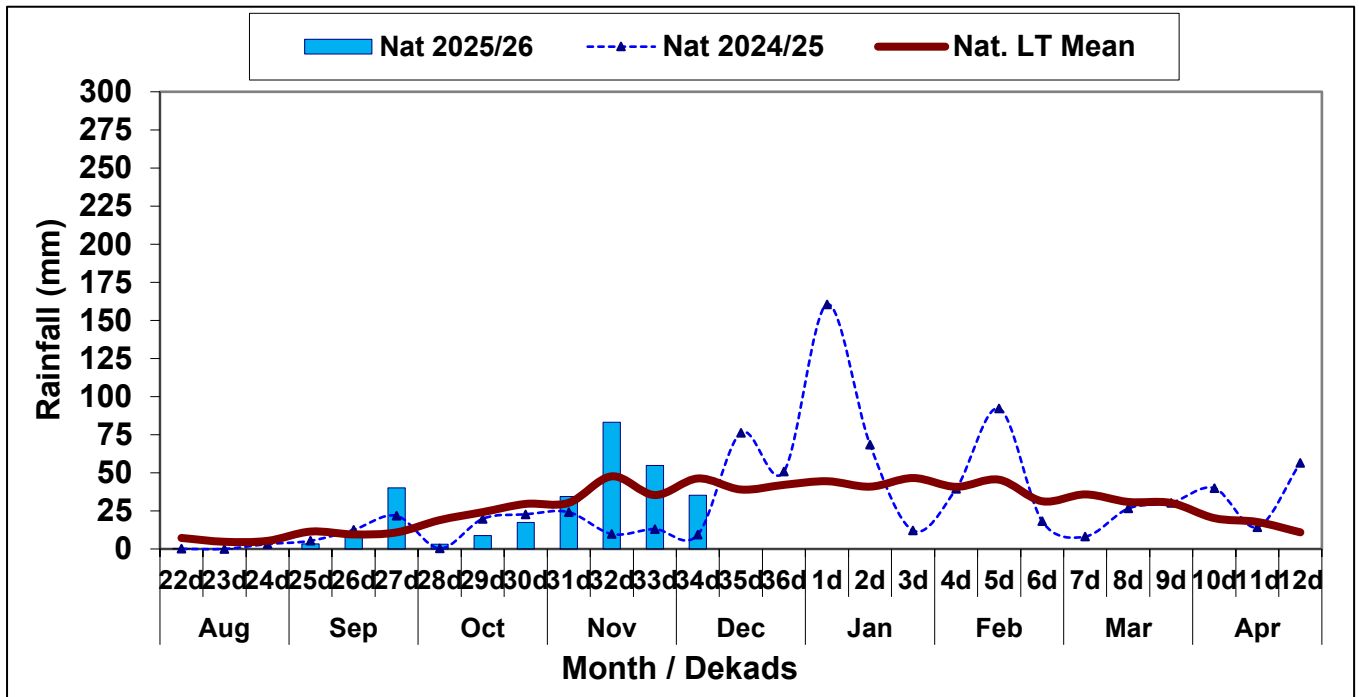
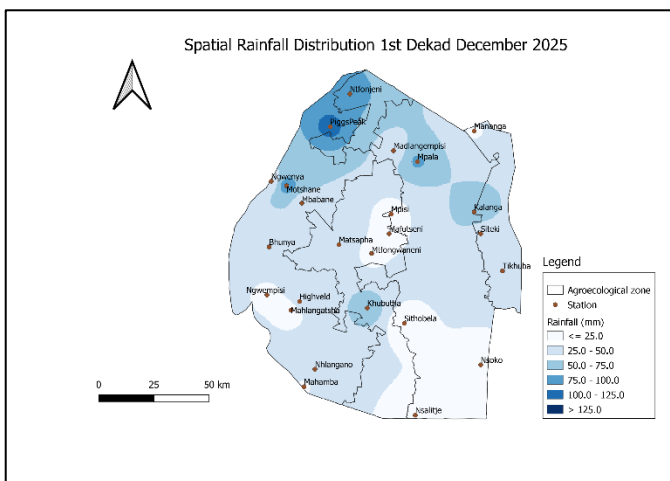
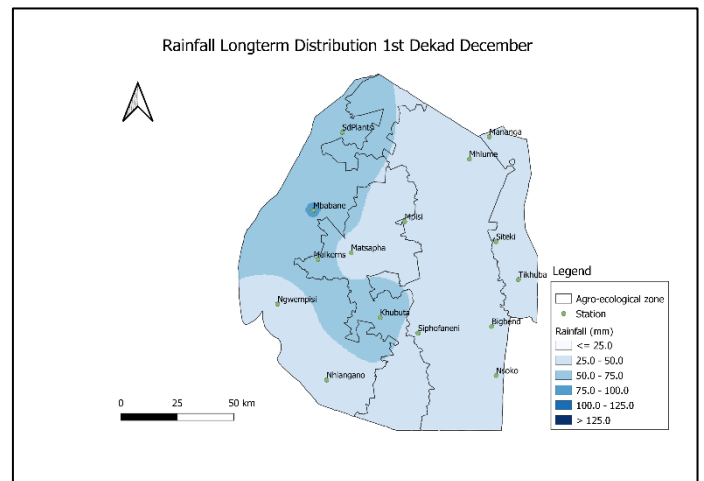


Figure 1: Rainfall distribution 1<sup>st</sup> dekad December 2025



Map 1: Spatial rainfall distribution 1<sup>st</sup> dekad December 2025



Map 2: Rainfall Longterm distribution 1<sup>st</sup> dekad December

Compiled and Issued by: Agrometeorological Unit,

Swaziland Meteorological Service, Ministry of Tourism and Environmental Affairs.

Box 2652, Mbabane, Swaziland. (+268) 2404 8859 / 2404 6274. Fax: 2404 1530

E-mail: [dudu@swazimet.gov.sz](mailto:dudu@swazimet.gov.sz)

# AGROMETEOROLOGICAL BULLETIN

Doc No: TEA 3/3/7/2 F-004

Revision No: 1

Effective Date: 01.07.2017

Page No: 3 of 5

Approved by:

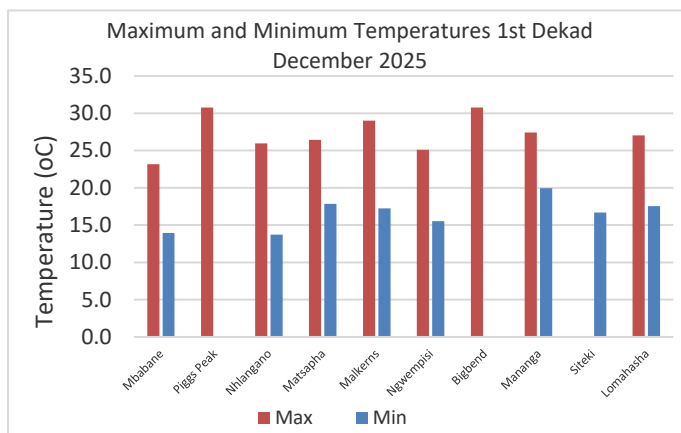
Slightly Below Normal rainfall was observed in all the Agro-ecological zones during the reporting period (**Table 1**).

**Table 1:** Rainfall (mm) 1<sup>st</sup> dekad December 2025

	HV	MV	LV	LP	
<b>2024/25</b>	12	6	8	22	
<b>Average</b>	59	50	34	44	
<b>2025/26</b>	45	33	25	36	
<b>Anomaly</b>	<b>-13</b>	<b>-17</b>	<b>-9</b>	<b>-8</b>	

## TEMPERATURES

Warm to hot temperatures were observed during the reporting period (**Figure 2**).



**Figure 2:** Maximum and Minimum temperatures 1<sup>st</sup> dekad of December 2025

## MAIZE AND OTHER CROPS

### CURRENT FARMING ACTIVITY

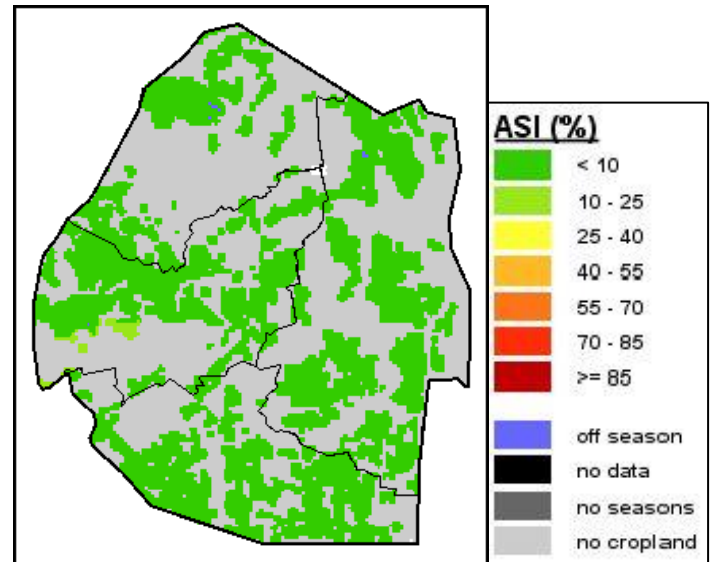
Most farmers have planted maize as sufficient rainfall continues to be received in most parts.

### MAIZE CROP STAGE AND CONDITION

Germinated maize in early vegetative stage is in good condition.

### OTHER CROPS

No other crops have been reported to have been planted.



**Image 1:** Agriculture Stress Index 1<sup>st</sup> dekad December 2025 Source: FAO-GIEWS

Compiled and Issued by: Agrometeorological Unit,

Swaziland Meteorological Service, Ministry of Tourism and Environmental Affairs.

Box 2652, Mbabane, Swaziland. ☎ (+268) 2404 8859 / 2404 6274. 📠 Fax: 2404 1530

E-mail: [dudu@swazimet.gov.sz](mailto:dudu@swazimet.gov.sz)

## AGROMETEOROLOGICAL BULLETIN

Doc No: TEA 3/3/7/2 F-004

Revision No: 1

Effective Date: 01.07.2017

Page No: 4 of 5

Approved by:

### LIVESTOCK AND PASTURES

Livestock is in good condition save for the few affected by the outbreak of the Foot and Mouth disease.

### WATER SITUATION

Dam levels have improved significantly as a result of continuous rainfall in the past ten days.

### MEDIUM-TERM OUTLOOK

#### RAINFALL

Increase in rainfall is expected in the outlook period.

#### TEMPERATURE

Cool to warm temperatures are anticipated in the outlook period.

#### SOIL MOISTURE

An improvement in soil moisture is expected in the outlook period.

#### WIND SPEED

Wind will generally be light to moderate in the outlook period

**NB: Outlook period is ten days from date of issue**

# AGROMETEOROLOGICAL BULLETIN

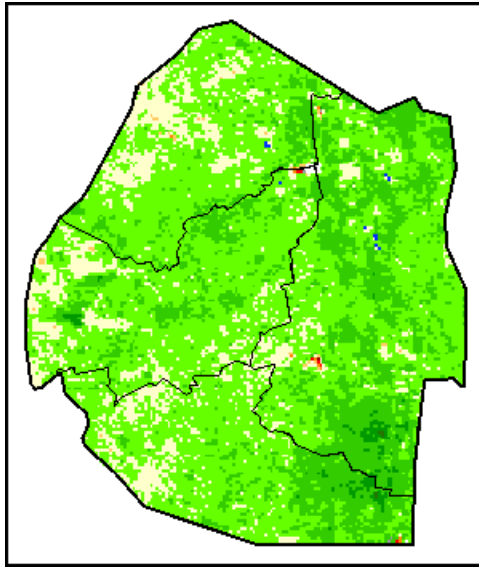
Doc No: TEA 3/3/7/2 F-004

Revision No: 1

Effective Date: 01.07.2017

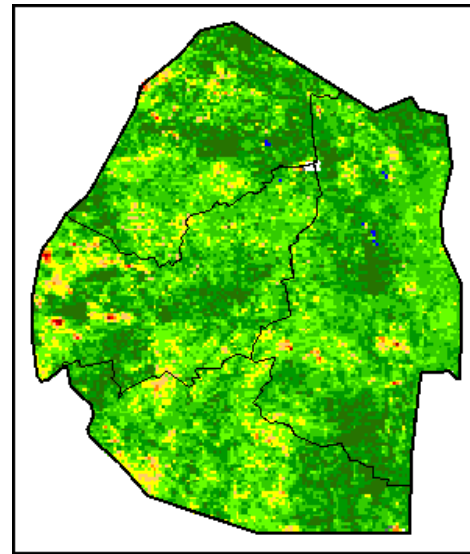
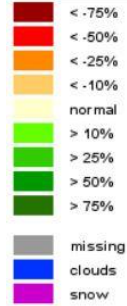
Page No: 5 of 5

Approved by:



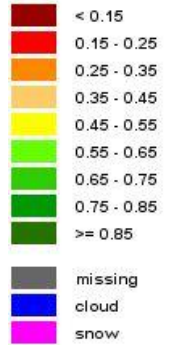
## Legend

### Difference to LTA



## Legend

### VHI



**Image 2: Normalized Difference Vegetation Index (NDVI) Anomaly (1<sup>st</sup> Dekad December 2025)**  
Source: FAO-GIEWS

**Image 3: Vegetation Health Index (VHI) (1<sup>st</sup> Dekad December 2025)**  
Source: FAO-GIEWS